

Bible Sampler Block 10 & Finishing

Quilt Block 10 (finished size 12 inches)

ABILITY

Suitable for all levels.

DESCRIPTION

This is Block 10 in the Bible Sampler of the Month Series.

ACRYLIC TEMPLATES USED

Optional acrylic templates are available for this Block of the Month from M&L Designs. www.mandldesigns.com or Baycreek Quilting Products www.quilttemplates.com

Fabric Requirements: We used Maywood Roses in dark blue and light blue, and scraps of yellow, green and white print. (Fabric yardage is given for the whole quilt.)

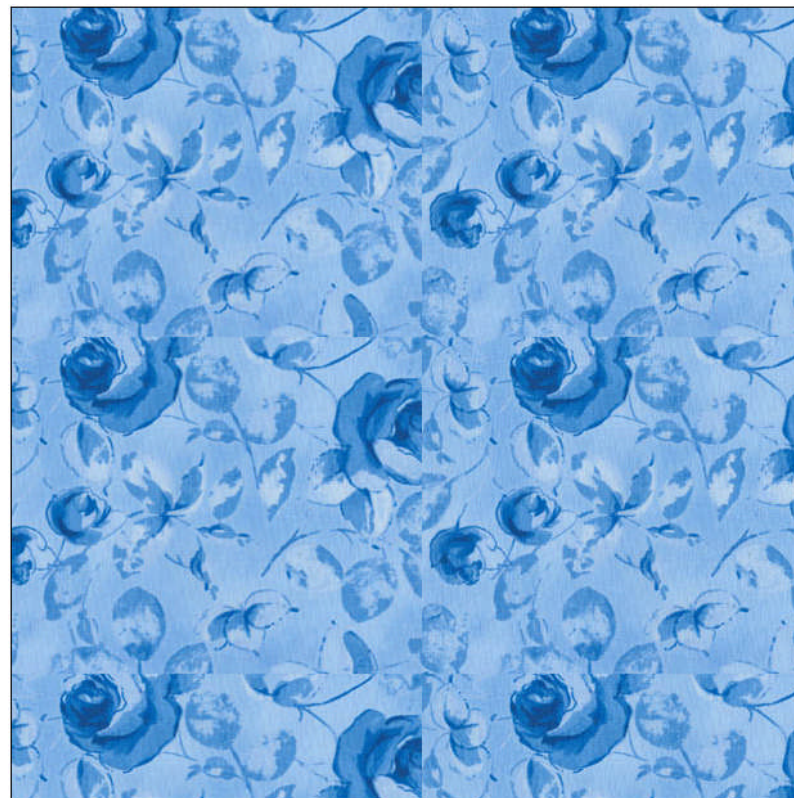


Light Blue	Color 1	2-1/4 yards
Yellow	Color 2	1 yard
Green	Color 3	1 yard
Dark Blue	Color 4	1 yard
White Print	Color 5	1-1/2 yard

We have made every effort to ensure that these instructions are accurate and complete. We cannot, however, be responsible for human error, typographical mistakes, or variations in individual work.

© 2011, Linda Laney, all rights reserved. No part of this pattern may be reproduced in any form or by any means without written permission from the designer.

Bible Sampler Block 10 & Finishing



Finished block size 12 inches.



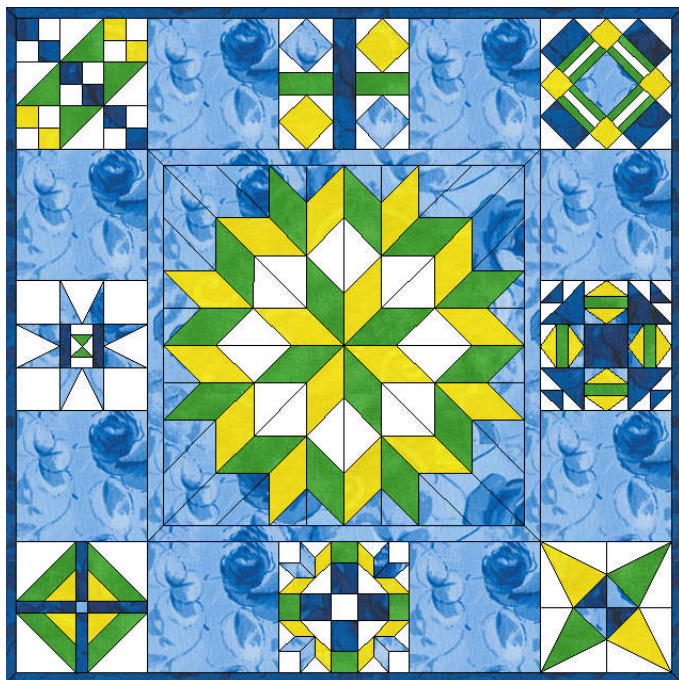
P.O. Box 395, Coos Bay, OR 97420

www.MandLdesigns.com

© 2011, Linda Laney, all rights reserved.

Use the bonus quilting design to quilt the plain blocks.

Your quilt top is now finished. Layer quilt top, batting, and backing. Quilt as desired by hand or machine.



GENERAL DIRECTIONS:

1. All seams are 1/4 throughout.
2. Press seams toward darker fabric after each step.
3. Use either the full size templates to cut out the patches, or the rotary cutting instructions.
4. Use the template diagrams for piecing each of the blocks together.
5. Follow finished block diagrams for color placement of patches.

TEMPLATES:

Trace your templates on to poster board or template plastic before cutting, or use the optional acrylic templates that are available on our website. Be sure to mark the Block letter and the Template letter on each Template.

Template Cutting Directions:

Finished size is 12 inches. You need 8 blocks. Cut the following number of patches:

A Color 1 8

Rotary Cutting Directions:

A – Cut 8 squares 12-1/2 inches from color 1.

Borders – cut 8 strips width of fabric by 1-1/2 inches of color 4.

Sewing Directions:

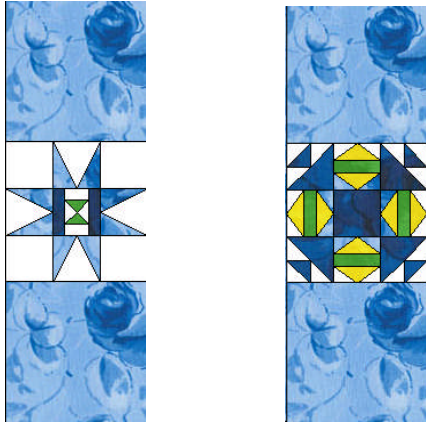
Step 1: Alternate Blocks 2, 3, and 4 with Block 10.



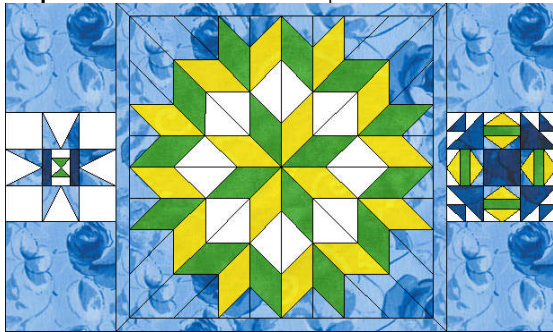
Step 2: Alternate Blocks 7, 8, and 9 with Block 10.



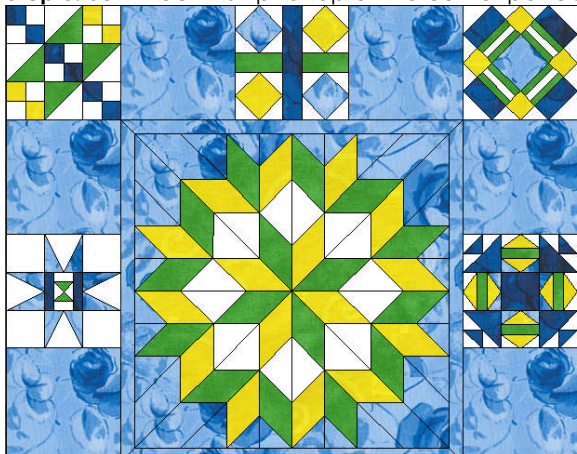
Step 3: Alternate Block 5 with Block 10, and Block 6 with Block 10.



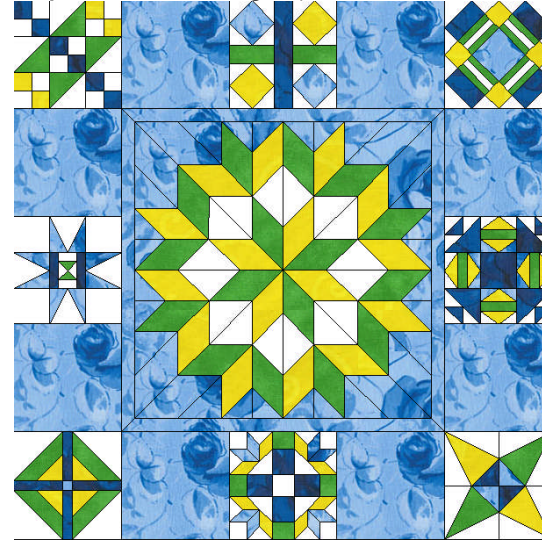
Step 4: Sew Block 5 and 6 strips to Block 1.



Step 5: Sew Block 2 strip to top of the center panel.



Step 6: Sew remaining strip to bottom of center.



Step 7: Sew 2 border strips together. Make 4 strips. Sew side borders to quilt, trim excess. Sew top and bottom borders to quilt, trim excess.

